

152' CREW BOAT

M/V Ms. Joy



Registration

Owner	Barry Graham Oil Service, LLC
Operator	Barry Graham Oil Service, LLC
Year Built	1998
Place Built	Breaux's Bay Craft
Flag	USA
Classification	USCG Subchapter T, Aluminum Hull Construction, Passenger (Inspected) Service



Main Characteristics

Length Overall	152 ft
Beam	30 ft
Depth	12 ft
Operating Draft	7.25 ft
Light Displacement	126.27 LT
Summer Freeboard	4.75 ft

Capacities

Fuel	15,514 USG
Rig Water	31,480 USG
Potable Water	821 USG

Deck Cargo

Tonnage	249 LT
Length	87 ft
Width	25 ft
Clear Deck Area	2,175 ft ²

Tonnage

Gross Registered Tons	98 GT
Net Registered Tons	68 GT

Machinery

Main Engines	4- 16v92-TA-DDEC
Horsepower	4,400 hp
Generators	2- 50 KW
Fire Monitor	350 gpm

Performance

Maximum Speed	22.5 knots
Economy Speed	17.5 knots

Fuel Consumption

Maximum Speed	160 USG/hour
Economy Speed	120 USG/hour

Accommodations

Crew	4 persons
Maximum Passengers	65 persons
Births	10
Passenger Area	71 first class seats & 1 head

Electronics & Controls

2 Radars	EPIRB 406 MHZ
GPS Positioning Plotter	Loudhailer
SSB Radio	PA System
2 VHF Radios	Navtex
AIS Locating	Boatrac
Depth Sounder	
Chart Plotter	
Magnetic Compass	

Special Equipment

Inflatable Life Rafts	72 Total Capacity
Life Preservers	69 Adult
Rescue Equipment	Rescue Platform, Ring Buoys
DAVIT	USCG Inspected
Fuel Meter	Flow Meter Register w/ Printer
Engine Monitoring	CSP
Search Lights	3 Total
Firefighting	Fixed CO ² System in all Machinery Spaces, Hand Portable & Semi-Portable Throughout vessel
Fire Detection	Integrated Smoke & Heat Detection

Corporate Office

Physical Address
12354 Padgett Switch Road
Irvington, Alabama 36544
P: 251.824.2774 F: 251.824.7058

Mailing Address

P.O. Box 982
Bayou La Batre, Alabama 36509

Operations Office

Physical Address
6044-B Railroad Avenue
Morgan City, Louisiana 70380
P: 985.702.9883 F: 985.702.9885

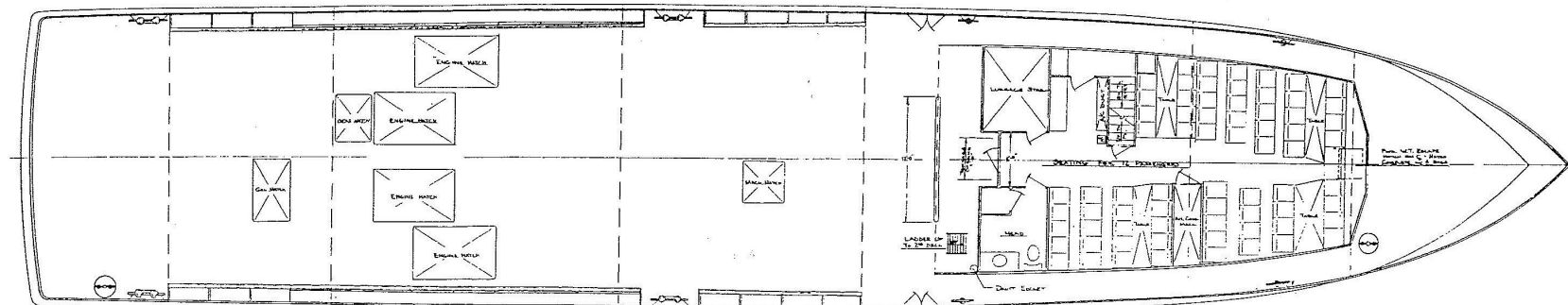
Mailing Address

P.O. Box 3403
Morgan City, Louisiana 70381

This specification is preliminary and subject to change without notice. Exact tank capacities, deadweight, deck cargo capacity and other figures that have been calculated may change when the actual vessel is delivered. As such, these particulars should be taken as indicative and do not constitute warranty. For additional information, please contact Barry Graham Oil Service, LLC at www.bgos.net.

WWW.BGOS.NET

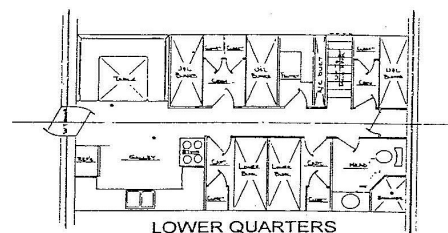
M/V Ms. Joy



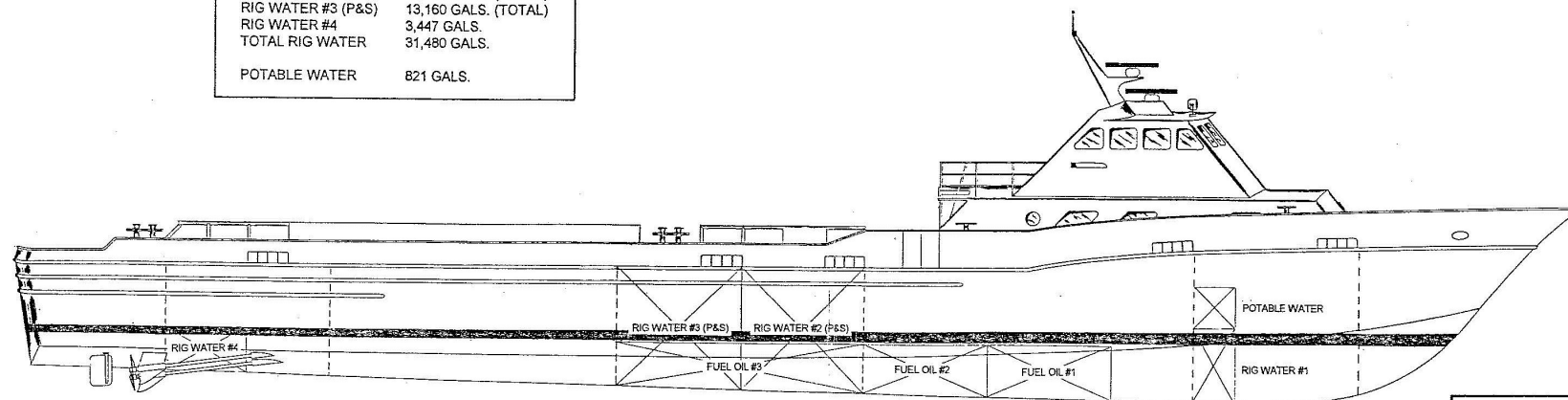
MAIN DECK PLAN

TANK CAPACITIES

FUEL OIL #1	4,169 GALS.
FUEL OIL #2	4,386 GALS.
FUEL OIL #3	6,959 GALS.
TOTAL FUEL	15,514 GALS.
RIG WATER #1	1,587 GALS.
RIG WATER #2 (P&S)	13,286 GALS. (TOTAL)
RIG WATER #3 (P&S)	13,160 GALS. (TOTAL)
RIG WATER #4	3,447 GALS.
TOTAL RIG WATER	31,480 GALS.
POTABLE WATER	821 GALS.



LOWER QUARTERS



BREAUX'S BAY CRAFT, INC.
LOREAUVILLE, LA.

VESSEL	152' X 30' CREW / SUPPLY
DESCRIPTION	PROFILE AND ARRANGEMENTS
HULL NO(S)	
SCALE	NONE
DATE	