

145' UTILITY VESSEL

M/V Capt. John E. Graham



Registration

Owner	Barry Graham Oil Service, LLC
Operator	Barry Graham Oil Service, LLC
Year Built	2004
Place Built	Halimar Shipyard, LLC
Flag	USA
Classification	USCG Subchapter L, Steel Hull Construction, Utility Vessel (OSV)



Main Characteristics

Length Overall	145 ft
Beam	36 ft
Depth	12 ft
Operating Draft	10.5 ft
Light Displacement	365.71 LT
Summer Freeboard	1.83 ft

Capacities

Fuel	32,000 USG
Potable Water	9,000 USG
Ballast/Rig Water	74,000 USG
Methanol 5	45,559 USG (1,300 BBLs)
Sewage	900 USG
Cooler	Walk-In 450 ft ³
Freezer	Walk-In 450 ft ³

Deck Cargo

Tonnage	350 LT
Length	94 ft
Width	32 ft
Clear Deck Area	3,008 ft ²

Tonnage

Gross Registered Tons	88 GT
Net Registered Tons	67 GT

Machinery

Main Engines	2- Cummins KTA38-MO
Horsepower	1,600 hp
Reduction Gears	Twin Disc MG5225
Gear Ratio	5.04:1
Generators	2- Cummins/Onan 6B5.9-D (m) 55kw
Tunnel Bow Thruster	Cummins N14-M, 360 hp
Fire Monitor	2,500 gpm

Performance

Maximum Speed (Light Ship)	13.8 knots (57 LT)
Maximum Speed (Full Load)	11.5 knots (350 LT)

Fuel Consumption

Maximum Speed (Light Ship)	78 USG/hour
Maximum Speed (Full Load)	78 USG/hour

Accommodations

Crew	4 persons
Maximum Passengers	36 persons
	Limited to 16 persons when carrying Methyl Alcohol
Berths	16

Electronics & Controls

Radar	Magnetic Compass
GPS Positioning Plotter	EPIRB 406 MHZ
SSB Radio	Loudhailer
VHF Radio	PA System
AIS Locating	Navtex
Depth Sounder	Boatrac
Chart Plotter	Satellite Telephone

Special Equipment

Life Floats	40 Total Capacity
Life Preservers	43 Adult
Rescue Equipment	Rescue Platform, Ring Buoys
DAVIT	USCG Inspected
Fuel Meter	Rotary Meter, Flow Meter
	Register with Printer
Engine Monitoring	CSP
Search Lights	3 Total
Firefighting	Hand Portable & Semi-Portable
	Throughout vessel
Fire Detection	Integrated Smoke & Heat
	Detection
Anchor Winch	

Corporate Office

Physical Address
12354 Padgett Switch Road
Irvington, Alabama 36544
P: 251.824.2774 F: 251.824.7058

Mailing Address

P.O. Box 982
Bayou La Batre, Alabama 36509

Operations Office

Physical Address
6044-B Railroad Avenue
Morgan City, Louisiana 70380
P: 985.702.9883 F: 985.702.9885

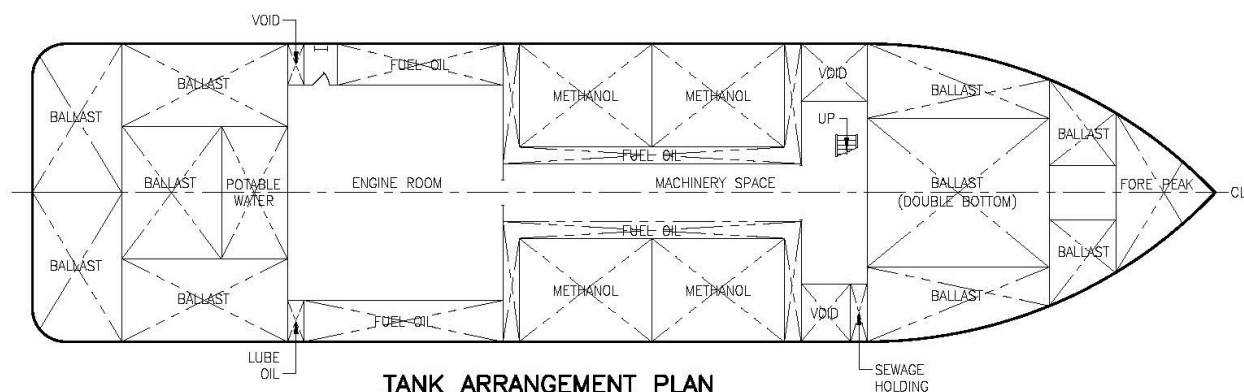
Mailing Address

P.O. Box 3403
Morgan City, Louisiana 70381

This specification is preliminary and subject to change without notice. Exact tank capacities, deadweight, deck cargo capacity and other figures that have been calculated may change when the actual vessel is delivered. As such, these particulars should be taken as indicative and do not constitute warranty. For additional information, please contact Barry Graham Oil Service, LLC at www.bgos.net.

145' UTILITY VESSEL

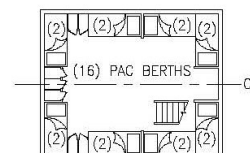
M/V Capt. John E. Graham



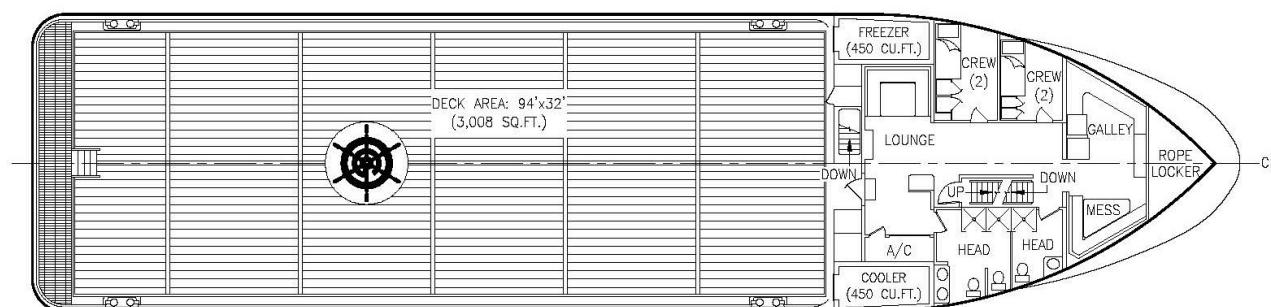
TANK ARRANGEMENT PLAN

CAPACITIES

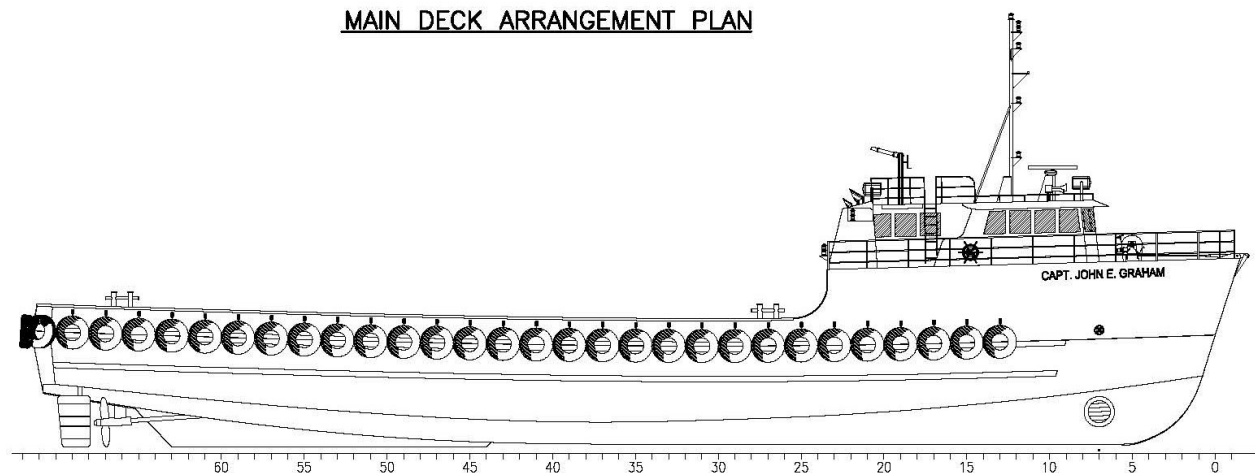
FUEL OIL	32,000 GALS.
BALLAST WATER	74,000 GALS.
METHANOL	1,300 BBLs.
LUBE OIL	425 GALS.
SEWAGE	900 GALS.



**PAC ACCOMMODATIONS
(BELOW MAIN DECK)**



MAIN DECK ARRANGEMENT PLAN



OUTBOARD PROFILE

BARRY GRAHAM OIL SERVICE, L.L.C.

POST OFFICE BOX 982
BAYOU LA BATRE, AL 36509
(251) 824-2774 FAX: (251) 824-7958

**M/V CAPT. JOHN E. GRAHAM
145'x36'x12'-0" OFFSHORE SUPPLY VESSEL**